

GARDNER-DENVER®

PUMPS • RIG COMPONENTS • AJAX® PUMPS
 — TUFF-BREED® PARTS • MAYHEW® RIGS —

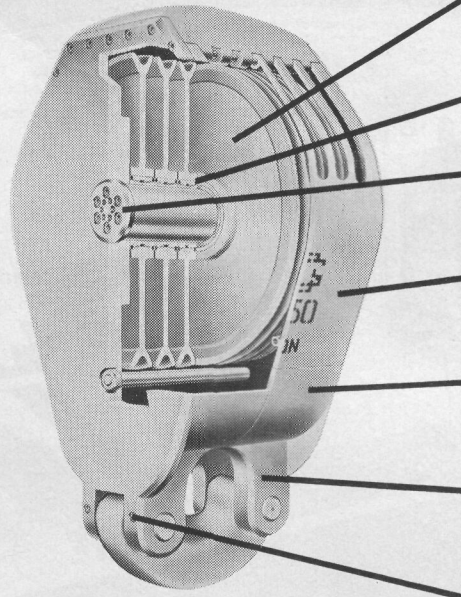
TRAVELING BLOCKS HOOK-BLOCK COMBINATIONS

TRAVELING BLOCKS

Gardner-Denver engineers have achieved a new ratio of weight to rated capacity. This has added up to 2,000 pounds of additional weight over competitive designs without increasing outside dimensions. The result is a low center of gravity block that falls faster and straighter. Fabricated sheaves, precision balanced, provide smooth operation and are used in all sizes and in matching crown blocks.

HOOK-BLOCK COMBINATIONS

Gardner-Denver Trim-True blocks may be ordered with your choice of unitized hook. Completely built in to provide a single short block assembly, it saves valuable space in short masts. The block case has been carefully designed with countersunk bolts, pins and sheave guards. The teardrop housing has smooth rounded edges and recessed bolts and pins.



FABRICATED SHEAVES

Wire line groove is flame-hardened to retain shape to prolong wire line life. Large diameter sheaves. Uniform in cross section and precision balanced.

HEAVY DUTY BEARINGS

Double row tapered roller bearings hold sheaves in alignment. Designed for radial and thrust loads.

INDIVIDUAL LUBRICATION

All sheaves can be lubricated from either side of block by their individual grease fittings.

EASILY REMOVABLE SHEAVE GUARDS

Heavy duty sheave guards are fastened to side plates by through-pins which can be easily removed for reaving.

SMOOTH TEARDROP HOUSING

Teardrop shaped housing has recessed bolts and pins as well as smoothly rounded edges. Side plates are from heavy steel plate re-enforced at the pin for extra strength.

HEAVY STEEL CLEVIS PLATE

Plate clevis is designed to permit raising of block to vertical while hook is still on floor. Heavy construction provides high strength in clevis and pins.

SIMPLE BAIL LOCK PIN

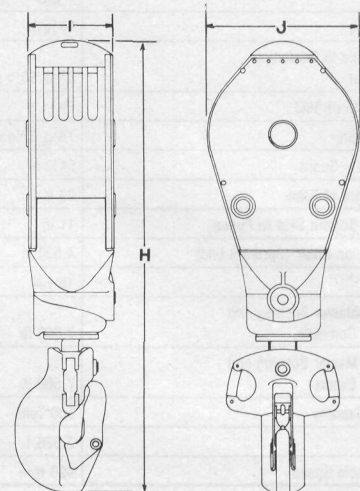
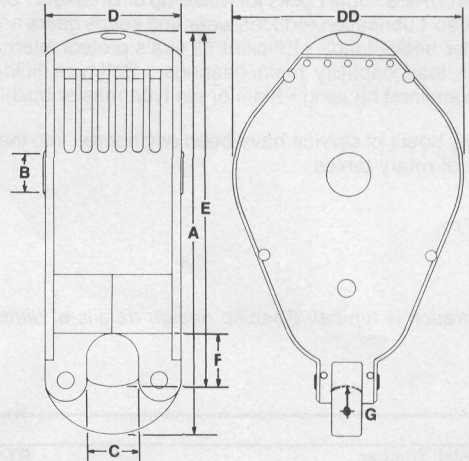
Bail is easily removed and assembled by removing tapered threaded pin which is recessed in clevis. No large wrench nuts or hammer nuts to remove.

TRAVELING BLOCK SPECIFICATIONS

MODEL		55 T-660	40 T-650	30 T-542	20 T-436	12 T-430
Depth Rating	ft.	15,000 +	10-20,000	8-14,000	5-10,000	4-8,000
	m.	4,572 +	3,048-6,096	2,438-4,267	1,524-3,048	1,219-2,438
Rated Capacity	ton	550	400	300	200	125
	Kg.	498,952	362,874	272,155	181,437	113,398
No. of Sheaves		6	6	5	4	4 or 3
Dia. of Sheaves	in.	60	50	42	36	30
	mm.	1,524	1,270	1,067	914	762
Sheave Grooves	in.	1 5/8, 1 1/2 or 1 3/8	1 3/8 or 1 1/4	1 1/4 or 1 1/8	1 1/8 or 1	1 1/8, 1 or 7/8
	mm.	112 1/2	95 1/8	78 3/8	69 1/2	58 1/4
A	in.	2,858	2,416	1,997	1,765	1,480
	mm.	10 1/2	9 1/4	8	6 1/2	5 5/8
B	in.	267	234	203	165	143
	mm.	13	12 1/4	10	8 1/2	7
C	in.	330	311	254	216	178
	mm.	34	31 3/4	25	22	20 1/8
D	in.	864	806	635	559	511
	mm.	63	52 1/2	44 1/2	38 3/4	33
DD	in.	1,600	1,334	1,130	984	838
	mm.	100	83 3/8	69 3/8	61 1/2	51 3/4
E	in.	2,540	2,124	1,762	1,562	1,314
	mm.	15	13	11 1/4	10 1/2	8 1/4
F	in.	381	330	286	267	210
	mm.	4	4	4	4	2 3/4
G	in.	102	102	102	102	70
	mm.	18,000	14,000	8,000	5,000	3,000
Weight	lb.	8,165	6,350	3,629	2,268	1,361
	Kg.					

HOOK-BLOCK COMBINATION SPECIFICATIONS

MODEL		TBJ-40	TBJ-30	TBJ-20	TBJ-12	TWW-40	TWW-30	TWW-20	TWW-12
Rated Capacity	tons	350	250	150	100	350	250	150	100
	Kg.	317,515	226,796	136,078	90,718	317,515	226,796	136,078	90,718
H	in.	164	133 1/2	117 1/4	95 1/4	141 3/4	119	103	92 1/2
	mm.	4,166	3,391	2,978	2,419	3,600	3,023	2,616	2,350
I	in.	31 3/4	25	22	20 1/4	31 3/4	25	20	20 1/4
	mm.	806	635	559	514	806	635	508	514
J	in.	52 1/2	44 1/2	38 3/4	33	52 1/2	44 1/2	38 3/4	33
	mm.	1,333	1,130	984	838	1,333	1,130	984	838
Weight	Lb.		10,500	7,700	5,000	19,000	10,500	7,700	5,000
	Kg.		4,763	3,493	2,268	8,618	4,763	3,493	2,268



Specifications subject to change without notice.