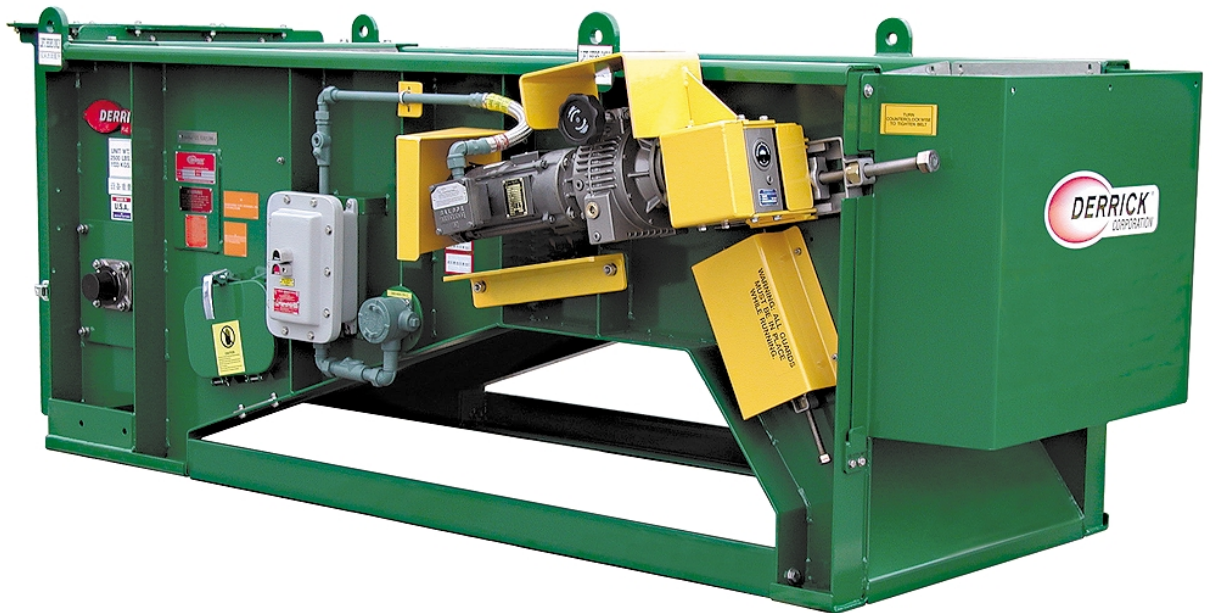




Flo-Line Primer™

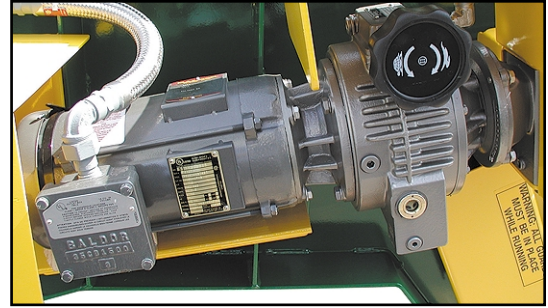


*Removes Hydrated Clays and Drilled Cuttings
Larger Than 850 Microns*

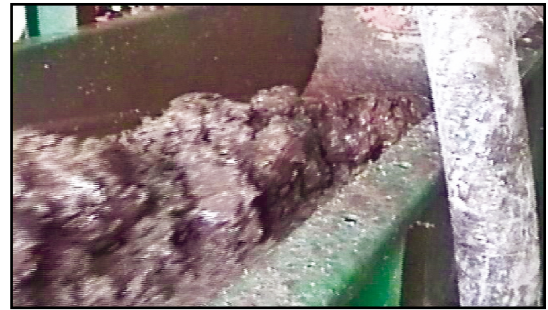
The patented Derrick Flo-Line Primer maximizes the solids removal capabilities of drilling rigs by effectively removing hydrated clays and large drilled cuttings. These solids have proven to be difficult to remove with any type of vibratory motion, thus it is important to remove them before they reach the downstream shale shakers. This enables the shakers to run finer screens, leading to lower dilution and operating costs. The Flo-Line Primer's versatility in removing a full size range of solids from drilling fluids makes it an asset to any drilling program. Two models are available: Model 200 is capable of processing 900-1200 GPM, and the longer Model 258, with a redesigned discharge chute to accommodate increased capacity, is capable of processing 1200-1500 GPM.

Features:

- The Primer is powered by a rugged 1.5 hp drive motor for superior performance and durability. Right or left hand mounted drives are available.
- The Primer utilizes a variable speed conveyor system to transport solids off the machine without vibration. This enables precise control over solids conveyance speed as loading or pump rates increase.
- The long-life (average running time: 250 hours) inclined synthetic conveyor belt is available in 5, 10, 20 and 30 mesh (10 and 20 mesh size are most prevalent), allowing control over cuttings' dryness and conveyance capacity.
- Four access doors, one located on each side and two on the back of the machine, allow for easy clean out and simplified belt replacement.
- Built in by-pass offers the ability to divert fluid directly to the downstream shakers when the Primer is not needed to remove sticky clays and gumbo.
- Counter rotating brush effectively cleans the belt without adding any water to the system.

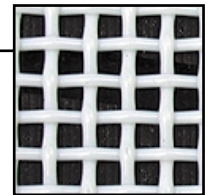
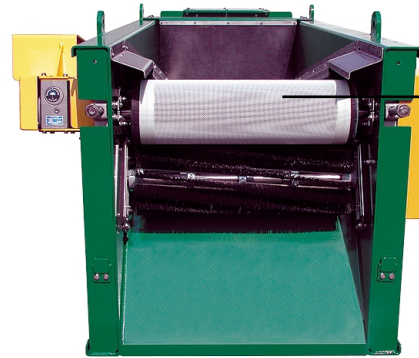
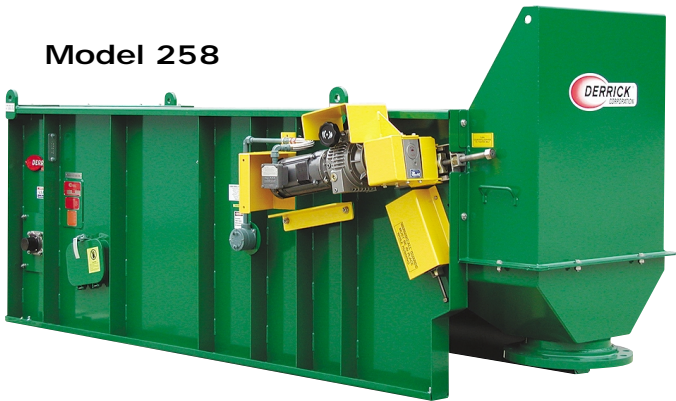


1.5 Horsepower Motor and Variable Speed Drive (remote control available)



Flo-Line Primer removing large drilled cuttings at 10 mesh.

Model 258



10 mesh screening belt

	DIMENSIONS (IN / MM)				(LBS / KG)
	Width	Length	Height	Weir Height	Weight
Model 200	53 3/4 / 1365	131 / 3327	46 1/4 / 1175	26 / 660	2,600 / 1179
Model 258	53 3/4 / 1365	159 / 4039	51 / 1295	26 / 660	3,100 / 1406

An Integral Part of the High **G** Solution®



15630 Export Plaza Drive • Houston, Texas 77032
 Toll Free: (866) DERRICK Phone: (281) 590-3003 • Fax: (281) 442-6948
www.DerrickEquipment.com



PYRAMID™ SCREEN