

# ST-80C Iron Roughneck

The new ST-80C Iron Roughneck incorporates all of the durability, ruggedness and performance of the original ST-80 Iron Roughneck into a new, smaller package. Designed for smaller, mechanical rigs where floor space is limited, the ST-80C Iron Roughneck provides the same fast, safe and reliable tubular make-up and break-out functions as the industry-leading ST-80 Iron Roughneck.

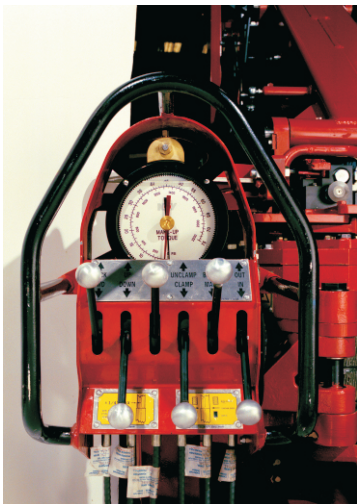
The ST-80C utilizes a compact scissor-arm system to increase the clearance around well center both during use and when stored. With the taller column, the ST-80C can be elevated and safely stored above the crew, providing the much needed drill floor space small rigs require. All hydraulic controls provide safe, fast, and reliable make-up and break-out of tubular connections ranging from 4¼ to 8½ inch diameter. With up to 80,000 ft-lbs of torque available, drilling connections are handled with ease.

The ST-80C is easily installed on virtually any drill floor utilizing either a single floor mounted socket or a floor mounted bearing and upper mast attachment for elevated storage. No hanging cable is needed. The ST-80C works as easily at well center as it does at a vertical Mousehole and can be rotated by hand around the pedestal for storage when not in use.

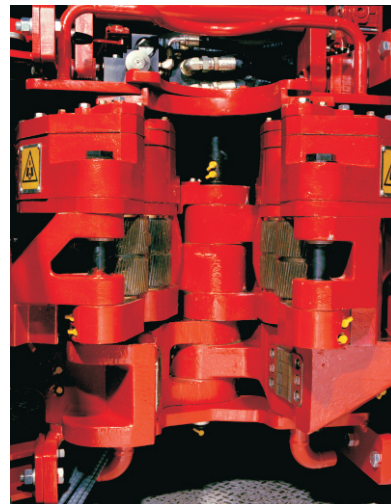
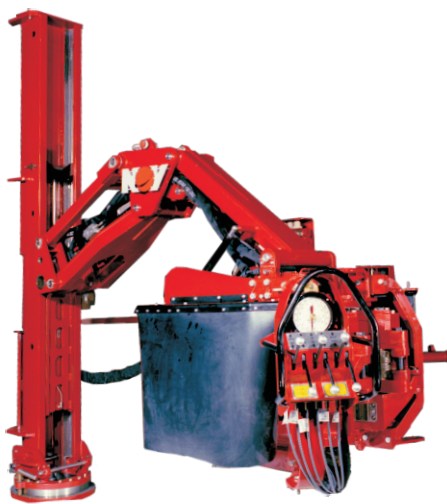
For fast, safe, and reliable make-up of all your drilling connections, chose the ST-80C Iron Roughneck, available only from the leader in Iron Roughnecks.



**ST-80C Iron Roughneck**



Controls



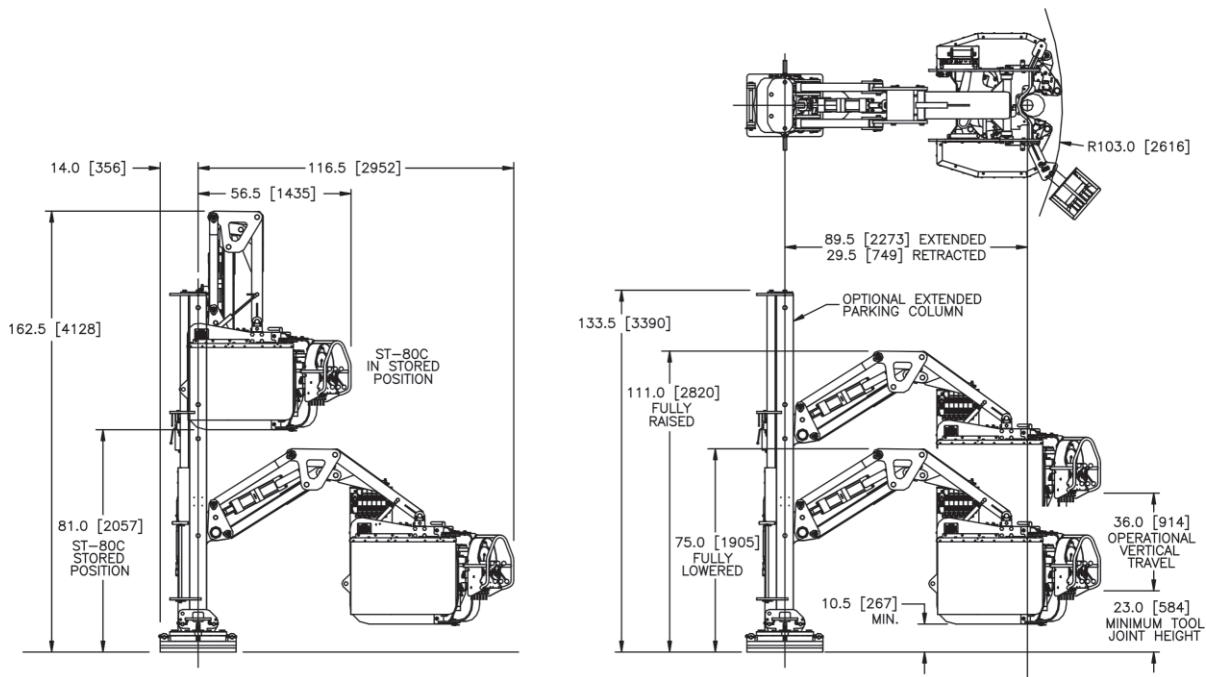
Spinner and Torque Wrench

[www.nov.com](http://www.nov.com) / [rig@nov.com](mailto:rig@nov.com)

10000 Richmond Avenue  
Houston, Texas 77042  
United States  
Phone: 713 346 7500  
Fax: 713 435 2195

**NOV** NATIONAL OILWELL VARCO

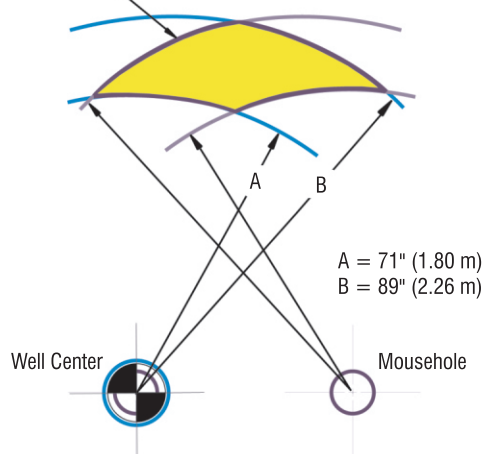
# ST-80C Iron Roughneck



## Technical Specifications

Assembly Weight	7,800 lbs (3,538 kg)
Hydraulic Requirements	28 GPM @ 2,100 psi (106 LPM @ 145 bar) min 40 GPM @ 2,500 psi (151 LPM @ 172 bar) max
Tubular Connection OD Range	4 1/4" to 8 1/2"
Spin Speed	75 RPM (nominal on 5" DP)
Spin Torque	1,750 ft-lbs (2,373 Nm)
Maximum Make-Up Torque	60,000 ft-lbs (81,500 Nm)
Maximum Break-Out Torque	80,000 ft-lbs (108,500 Nm)
Connection Height	23" to 59" (584 mm to 1,498 mm)
Horizontal Travel	60" (1,524 mm)
Casing Ready	No

Installation "Diamond"



This Floor Socket installation location allows operation at both well center and the mousehole.

[www.nov.com](http://www.nov.com) / [rig@nov.com](mailto:rig@nov.com)

10000 Richmond Avenue  
Houston, Texas 77042  
United States  
Phone: 713 346 7500  
Fax: 713 435 2195

**NOV** NATIONAL OILWELL VARCO

© 2010 National Oilwell Varco  
D391000305-MKT-001 Rev. 05