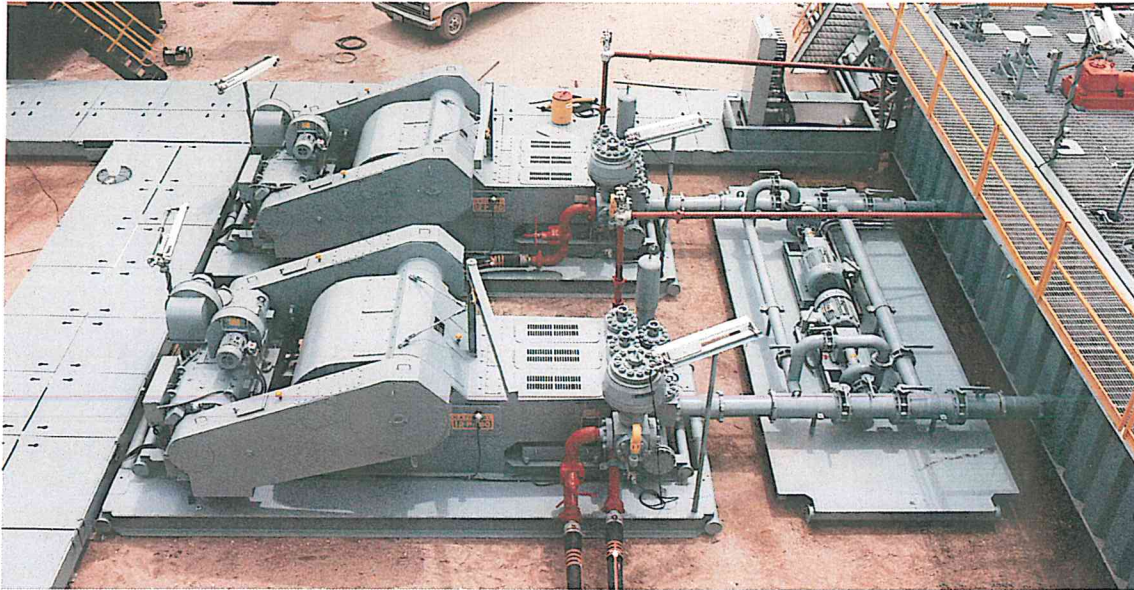


# 12-P-160 Mud Pump

The National Oilwell Varco® 12-P-160 Mud Pump is rated at 1600 input horsepower (1193 kW) at 120 strokes per minute, with an 12-inch (304.8 mm)

stroke. Multiple liner sizes allow pressures and volumes to handle circulation requirements in deep drilling applications.



**12-P-160 Mud Pump**

## Dimensions and Specifications

Height, floor to center of front inlet suction, inches (mm)	16½ (419)	Maximum fluid cylinder line bore, inches (mm)	7¼ (184.2)
Height, floor to center of discharge, inches (mm)	45¼ (1149)	Stroke, inches (mm)	12 (304.8)
Overall length over skids, inches (mm)	209 (5309)	Hydrostatic test pressure of standard fluid cylinders, psi (kg/cm²)	11,250 (791)
Width over frame, inches (mm)	78¾ (1997)	Ratio of gears	3.439
Width over pinion shaft, inches (mm)	113¾ (2889)	Suction connection, ASA-150 lb. R.J. Flange (inches)	10
Height, floor to top of gear case, inches (mm)	75 (1905)	Discharge connection, cross w/API-10,000 lb. R.J. Flange (inches)	5
Height over fluid cylinders, inches (mm)	62½ (1599)	Valve pot, API number	MOD. 7
Max. input, horsepower (kW)	1600 (1193)	Weight-complete, less sheave, lbs. (kg)	54,700 (24,810)
Rated pump speed, spm	120		

## Performance

Liner size, inches (mm)	7¼ (184.2)	7 (177.8)	6¾ (171.5)	6½ (165.1)	6¼ (158.8)	6 (152.4)	5¾ (146.1)	5½ (139.7)	5 (127)	4½ (114.3)
Max. Discharge Pressure, psi (kg/cm²) with high pressure Fluid End**	3200 (225)	3430 (241.1)	3690 (259.4)	3980 (279.8)	4305 (302.7)	4670 (328.3)	5085 (357.6)	5555 (390.6)	6720 (472.6)	7500 (527.4)
Pump Speed	120†	120	120	120	120	120	120	120	120	120
Max. Input HP	1600†	1600	1600	1600	1600	1600	1600	1600	1600	1600
Hydraulic* HP	1440	1440	1440	1440	1440	1440	1440	1440	1440	1440
GPM* (LPM*)	772 (2922)	720 (2724)	669 (2533)	621 (2349)	574 (2172)	529 (2002)	486 (1840)	444 (1681)	367 (1389)	297 (1124)
GPM (LPM)	720 (2724)	600 (2270)	558 (2111)	517 (1958)	478 (1810)	441 (1668)	405 (1533)	370 (1401)	306 (1158)	248 (939)
GPM (LPM)	669 (2533)	558 (2111)	446 (1689)	414 (1566)	383 (1448)	353 (1334)	324 (1227)	296 (1121)	245 (927)	198 (750)
GPM (LPM)	621 (2349)	517 (1958)	414 (1566)	310 (1175)	287 (1086)	264 (1001)	243 (920)	222 (840)	184 (697)	149 (564)
GPM (LPM)	574 (2172)	478 (1810)	383 (1448)	310 (1175)	287 (1086)	264 (1001)	243 (920)	222 (840)	184 (697)	149 (564)
GPM (LPM)	529 (2002)	441 (1668)	353 (1334)	310 (1175)	287 (1086)	264 (1001)	243 (920)	222 (840)	184 (697)	149 (564)
GPM (LPM)	486 (1840)	444 (1681)	405 (1533)	370 (1401)	306 (1158)	248 (939)	198 (750)	149 (564)	99 (375)	
GPM (LPM)	444 (1681)	370 (1401)	306 (1158)	248 (939)	198 (750)	149 (564)	99 (375)			
GPM (LPM)	367 (1389)	297 (1124)	248 (939)	198 (750)	149 (564)	99 (375)				
GPM (LPM)	306 (1158)	248 (939)	198 (750)	149 (564)	99 (375)					
Vol./stroke, gal. (Liters)	6.433 (24.352)	5.997 (22.703)	5.576 (21.11)	5.171 (19.575)	4.781 (18.098)	4.406 (16.680)	4.046 (15.316)	3.702 (14.014)	3.068 (11.614)	2.478 (9.380)

\* Based on 90% mechanical efficiency and 100% volumetric efficiency

\*\* 5,000 PSI Fluid End configuration available

† Rated speed and input horsepower

[www.nov.com](http://www.nov.com) / [corporatemarketing@nov.com](mailto:corporatemarketing@nov.com)

10000 Richmond Avenue  
Houston, Texas 77042  
United States  
Phone: 713 346 7500  
Fax: 713 435 2195

**NATIONAL OILWELL VARCO**

© 2009 National Oilwell Varco  
PMP-12P160-FLY-001 Rev. 04